

To assemble, place on a firm flat surface at a comfortable working height



Position the lid ensuring that the aperture faces the handle and label ...



... now place the lid onto the base ensuring that the inner seal of the lid is inserted into the base ...



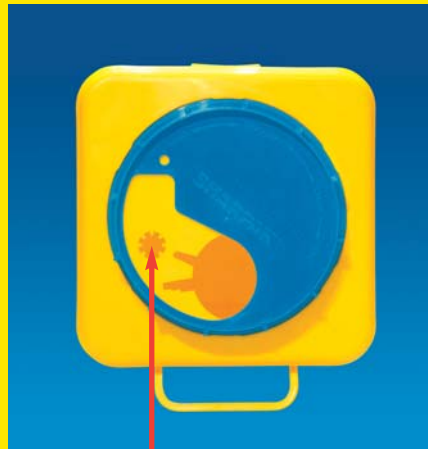
... NOW press down all four corners fully in turn, in the sequence shown to secure the lid to the base. Double check that the side latches are also engaged.

**4** clicks and you're there!



Follow steps 1 to 4 for safe closing and final locking of the container

**1** Open



**2** Half Open



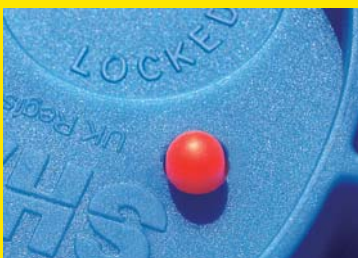
Insulin Pen Needle removing Feature



**3** 1st Click Closed



**4**  
2nd Click Fully Locked



**VisiLOCK™**  
PATENTED

Supplied by:

Patron Distributors Ltd  
Unit 81, Baldoyle Industrial Estate  
Dublin 13, Ireland  
Tel: +353 (0)1 8391299  
Fax: +353 (0)1 8391026  
Email: info@patron.ie  
Web: www.patron.ie

